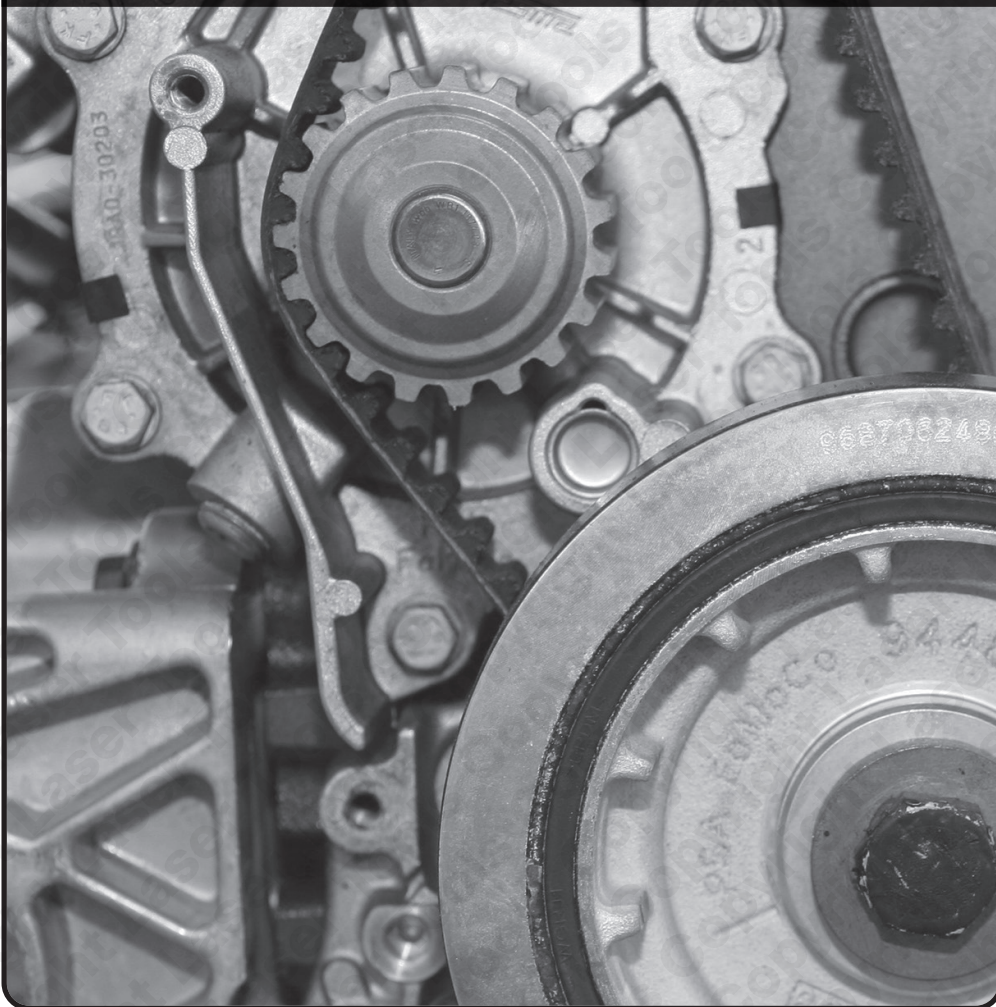


LASER[®]

Part No. 3628

Instructions

Camshaft Locking Tool for Alfa Romeo



www.lasertools.co.uk

Introduction

A pair of camshaft locking tools which can be used separately as inlet and exhaust camshaft locking tools.

- Suitable for Alfa Romeo 145/146 1.8 & 2.0 Twin Spark (from 1996) and 155/156/Spider/ GTV 2.0 16v (from 1995).
- Marked B1 for No. 3 cyl. (exhaust).
- Marked B2 for No. 2 cyl. (inlet).
- Equivalent to OEM 1 825 041 000.

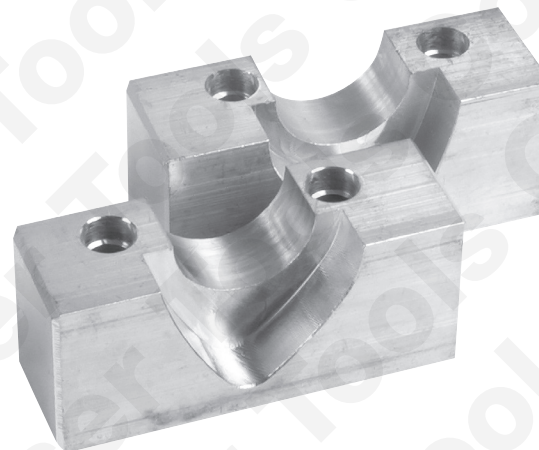
These instructions are for guidance only. Please refer to OEM derived data such as the vehicle manufacturers' own data or Autodata.

Incorrect or out of phase engine timing can result in damage to the valves.

The use of these locking tools is purely down to the user's discretion and The Tool Connection Ltd. cannot be held responsible for any damage caused whatsoever.



Components



Ref.	Description
B1	for No. 3 cyl. (exhaust)
B2	for No. 2 cyl. (inlet)

Applications

Manufacturer	Model	Year	Engine Codes
Alfa Romeo	145	1996 - 2001	1.8L Twin Spark
	146		322.01
	147	2001 - 2010	322.05
	155	1995 - 1998	671.06
	156	1997 - 2006	2.0L Twin Spark
	166	1998 - 2007	162.01
	GTV	1995 - 2003	323.01
	Spider		323.10
			341.03
			363.01
			672.04

Always refer to the website for most up to date applications:
www.lasertools.co.uk/product/3628

Safety Warnings - please read

- If the engine has been identified as an Interference engine, damage to the engine will occur if the timing belt has been damaged. A compression check of all the cylinders should be taken before the cylinder head (s) are removed.
- Do not turn crankshaft or camshaft when the timing belt/chain has been removed.
- To make turning the engine easier, remove the spark plugs/glow plugs or injectors.
- Observe all tightening torques.
- Do not turn the engine using the camshaft or any other sprocket.
- Disconnect the battery earth lead (check Radio code is available).
- Do not use cleaning fluids on belts, sprockets or rollers.
- Some toothed timing belts are not interchangeable. Check the replacement belt has the correct tooth profile.
- Always mark the belt with the direction of running before removal.
- Do not lever or force the belt onto its sprockets.
- Do not use timing pins to lock the engine when slackening or tightening the crankshaft pulley bolts.
- ALWAYS REFER TO A REPUTABLE MANUFACTURERS WORKSHOP MANUAL.



Safety First. Be Protected.

Our products are designed to be used correctly and with care for the purpose for which they are intended. No liability is accepted by the Tool Connection for incorrect use of any of our products, and the Tool Connection cannot be held responsible for any damage to personnel, property or equipment when using the tools. Incorrect use will also invalidate the warranty.

If applicable, the applications database and any instructional information provided has been designed to offer general guidance for a particular tool's use and while all attention is given to the accuracy of the data no project should be attempted without referring first to the manufacturer's technical documentation (workshop or instruction manual) or the use of a recognised authority such as Autodata.

It is our policy to continually improve our products and thus we reserve the right to alter specifications and components without prior notice. It is the responsibility of the user to ensure the suitability of the tools and information prior to their use.



When you have finished with this toolset please recycle it

www.lasertools.co.uk



Distributed by The Tool Connection Ltd
Kineton Road, Southam, Warwickshire CV47 0DR
T +44 (0) 1926 815000 F +44 (0) 1926 815888
info@toolconnection.co.uk www.toolconnection.co.uk

Guarantee

If this product fails through faulty materials or workmanship, contact our service department direct on: **+44 (0) 1926 818186**. Normal wear and tear are excluded as are consumable items and abuse.

3628_Instructions_V3

www.lasertools.co.uk